

Installation Manual

muirsis

Zero-Touch™ Faucet

Installation

Thank you for choosing the Muirsis Zero-Touch™ faucet. We are dedicated to providing you with the most advanced technology and superior performance. This product is designed to bring you years of trouble free operation.

Please read the entire installation manual before proceeding. Contact our customer service department if you have any questions or concerns about your Muirsis Zero-Touch™ faucet.

Features:

Type: Electronic touch-free faucet • Two Hole Installation • Single Hole Installation with optional Deck Plate

Faucet Body: Solid brass construction

Control Panel: Solid brass construction

Power: AC powered / 4 – AA back up batteries*

Control Box: Integrated check valves, anti-scalding safety device and motorized mixing valve

Aerator: 1.5GPM @ 60PSI • 5.7lpm @414kPa

Installation: Basic tools required

*If the AC adapter is not used, please install 4 – AA batteries to each side of the control box

Specifications:

Water Pressure	20 PSI to 125 PSI
Water Inlet	½" Connection
Operating Temperature	Full Cold to 120°F*
Sensor Distance	½ Inch
Response Time	0.4 seconds
Shut off Time	0.6 seconds
Warranty	1 Year Limited Warranty

*Anti-scalding safety feature limits the maximum water temperature to 120°F

Certified with the following standards: ADA compliant • ASME112.18 / CSA B125.1 • California AB1953 / Vermont S152 • ANSI / NSF61-9 • ASSE 1070 • EPA Water Sense • Meets Cal Green standards

Package Contents:

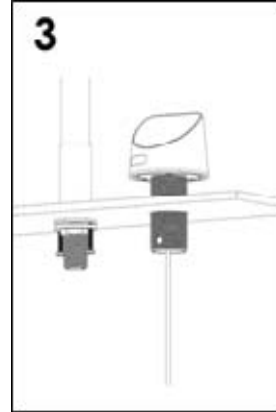
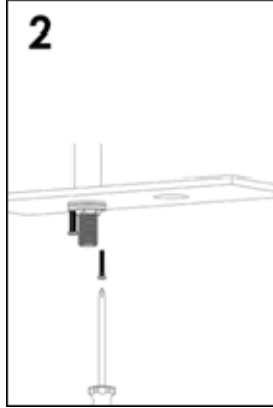
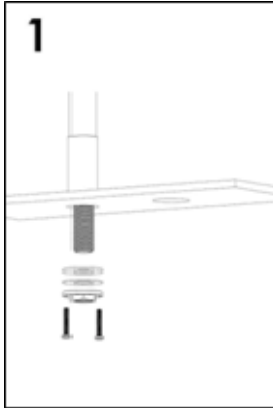
- Faucet Body and Control Panel
- Control Box with mounting screws
- Aerator Key
- AC adapter and 8 – AA batteries
- 24" braided water supply hose

If you are missing any parts or would like to purchase optional equipment, please contact a Muirsis Customer Support representative at 714-579-1555 or customersupport@muirsis.com

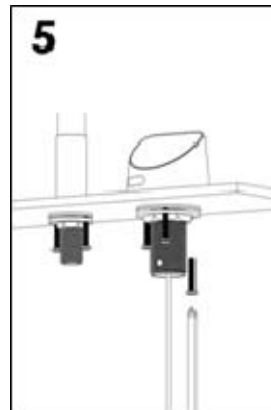
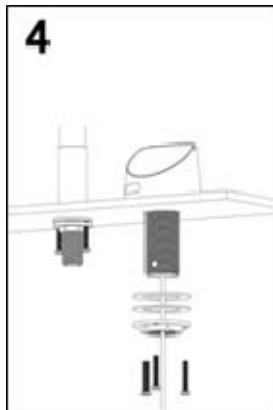
Step One: Faucet Installation:

The Muirsis faucet system can be installed in a two-hole or single-hole configuration. For a single-hole installation, you must use the optional deck plate.

➤ **Two-Hole Installation:**



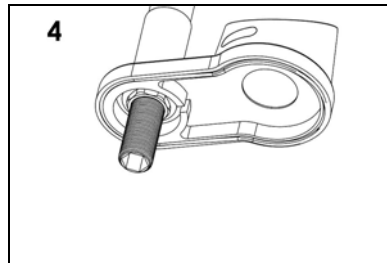
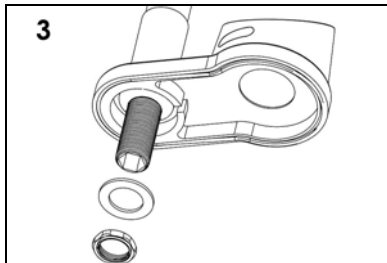
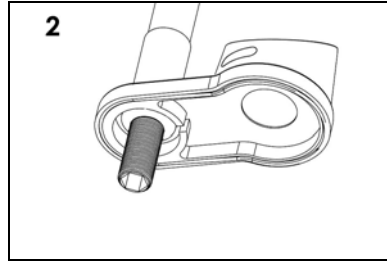
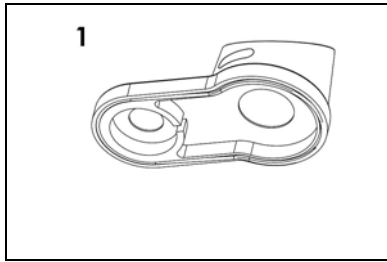
1. Place the faucet on the countertop. Install the rubber washer, metal washer and nut.
2. Tighten the two screws on the nut with a screwdriver.
3. Place the control panel into the second hole on the countertop.



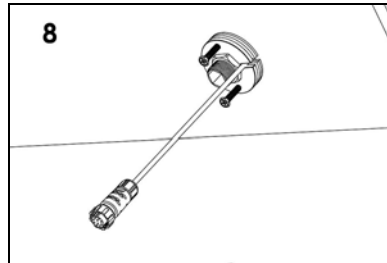
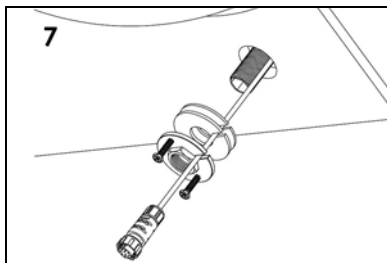
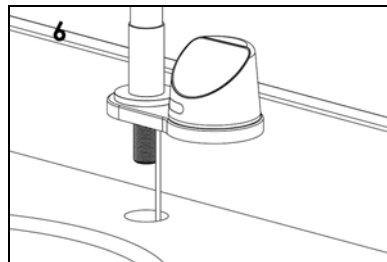
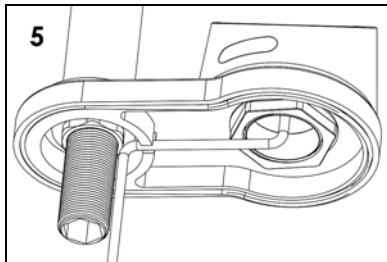
4. Install the rubber washer, metal washer and nut.
5. Tighten the three screws on the nut with a screwdriver.

Continue to Step Two: Control Box Installation:

➤ **Single-Hole Installation:**

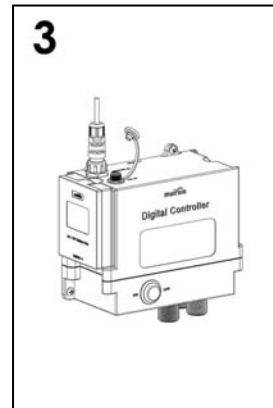
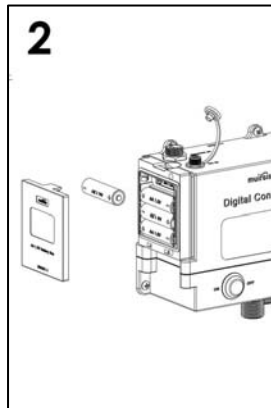


1. Remove the deck plate assembly from the package
2. Place the faucet on the deck plate
3. Insert the rubber washer and nut on the faucet shank
4. Make sure the faucet is facing forwards and tighten the screw

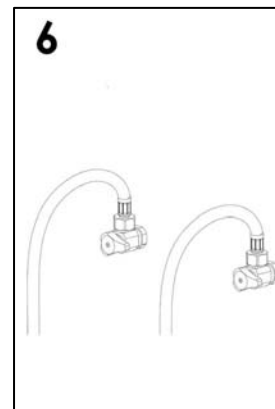
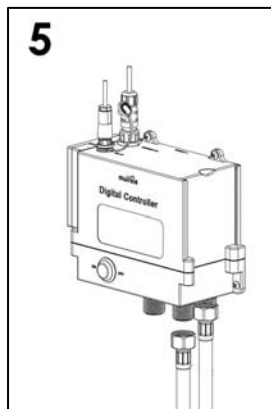


5. Run the control panel cable through the slot
6. Place the deck plate assembly on the counter
7. Install the rubber washer, metal washer and nut on the faucet shank
8. Tighten the two screws on the nut. Make sure the wire runs through the cut-outs on the washers

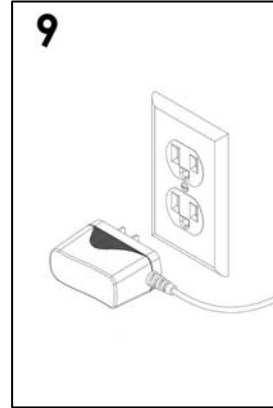
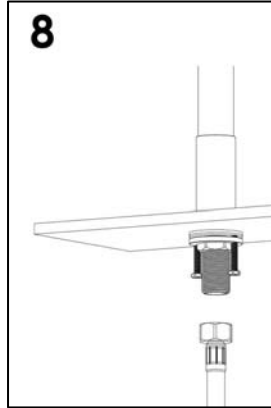
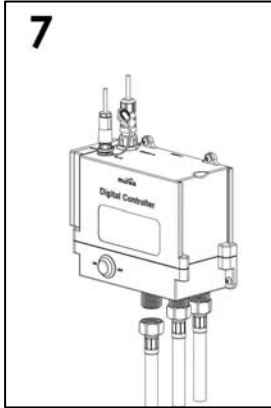
Step Two: Control Box Installation:



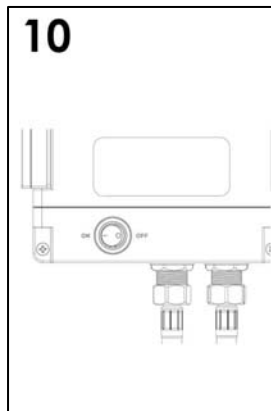
1. Mount the control box underneath the countertop. Use the four screws supplied with the package. If mounting the control box to drywall, use the supplied drywall anchors.
2. Insert 4 – AA batteries into one of the battery boxes.
3. Connect the wire from the control panel to the “Sensor In” connector.



4. Connect the AC adaptor to the “DC In” connector. **NOTE:** If you do not plan on using the AC adaptor, please install 8 – AA batteries. Populate both the left and right side battery boxes.
5. Connect the cold water supply hose to the cold water inlet. Connect the hot water supply hose to the hot water inlet.
6. Connect the opposite ends of the supply lines to the main water supply valves.



7. Connect the water supply hose to the control box.
8. Connect the other end to the faucet.
9. Plug in the AC adapter to the wall outlet.



10. Power on the unit.

The installation is now complete. Turn on the main water supply valves. Operate the faucet and check for leaks. If water leaks are present, tighten the hoses that are leaking. Be careful not to over tighten the water supply hoses. Doing so may damage the washers inside the supply hoses.

Please read the Muirsis operating manual to fully understand all the functions available on the infection control faucet.

Thank you for purchasing the Muirsis Zero-Touch™ faucet. We hope you are completely satisfied with the product. If you have any questions or comments, please do not hesitate to contact us immediately.

For helpful tips and videos, please visit the installation section on the Muirsis website:

www.muirsis.com



2861 Saturn Street, Suite A, Brea, CA 92821

© Muirsis Inc. 2014